



core clapton

WEDDINGS
AT THE OLD PARISH HALL

THE VENUE

A beautiful blank canvas venue in the heart of East London.

The Old Parish Hall is a fabulous alternative venue for wedding receptions, parties, events, workshops and celebrations. It's mixture of historic and modern features make it an exciting and dynamic space to host a party. The size of the space and natural light creates a sense of scale that's perfect for special occasions.

A versatile space and large blank canvas which allows you to add your special touches. The Old parish hall is the perfect space for couples looking to put their own stamp on their wedding venue and let their personal style shine through.

We are not a package deal kind of place. We can offer you the flexibility to cherry pick your wedding suppliers so you can create your perfect celebration. If you need help planning or executing your event then we also have a curated list of recommended suppliers and wedding professionals.

Our venue is a space for community, wellness and celebration. Core Clapton is also a registered charity and by hiring our spaces for your wedding you will be investing back into our community initiatives.



WEDDINGS AT THE OLD PARISH HALL
A BLANK CANVAS FOR YOUR DAY



THE MAIN HALL

This space really has the wow factor! A huge 220 sq meter light filled hall, with an original vaulted ceiling beautifully married with modern interior finishes. This room is a great space for the heart of your celebration, where your guests can come together for dinner, drinks and dancing.

Capacity 180 people seated



THE GROUND FLOOR

The entrance hall is an open, versatile space with a beautiful parquet flooring, a stage and bespoke interior features. This room is the perfect space for your welcome reception and post ceremony drinks or would even make a great chill out area for guests to relax away from the party upstairs. The room has access to the professional kitchens where your caterers can prepare your wedding feast.

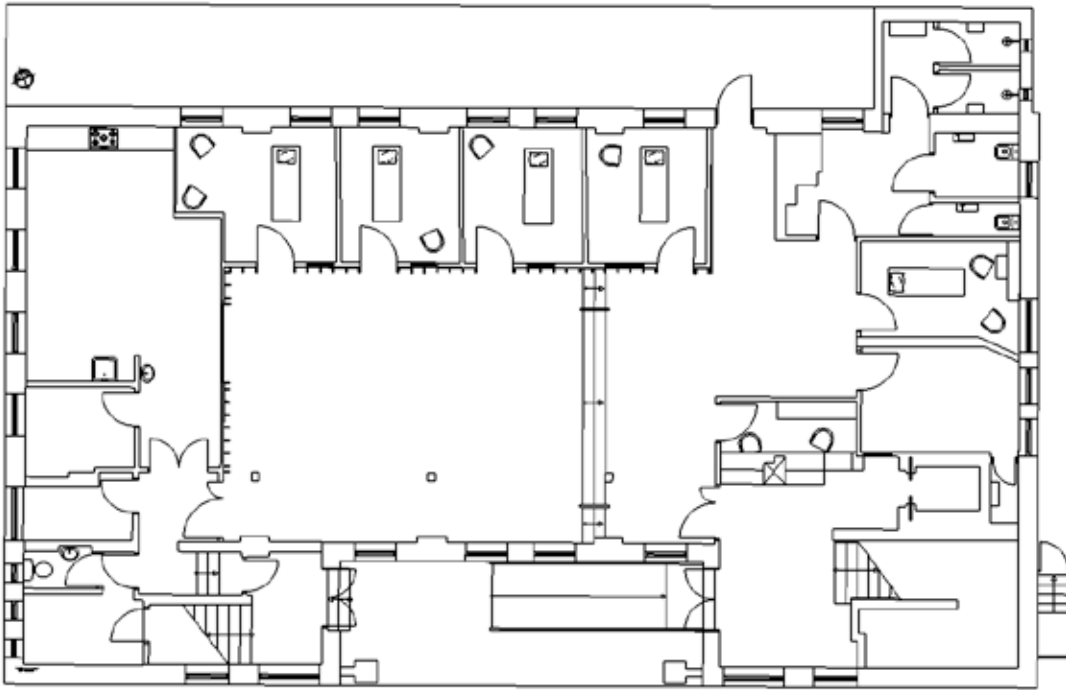
Capacity 130 standing



OUTDOOR SPACE

This small but cosy space gives you an off-street outdoor area for your guests to escape the party for some fresh air. If your celebration requires a designated smoking terrace then this is the spot for it.

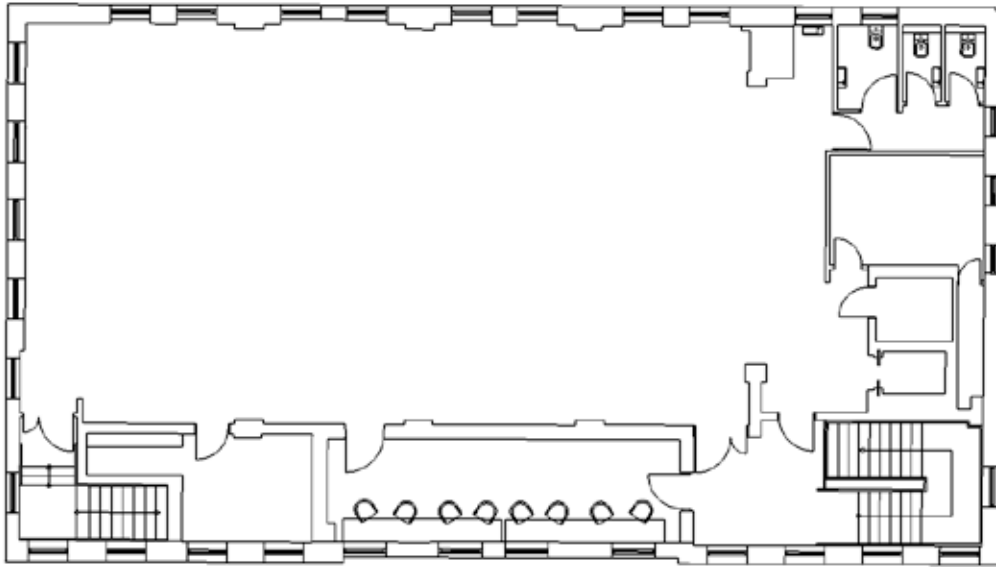
GROUND FLOOR



Ground Floor - supporting reception area with professional kitchen.
Both floors are wheelchair accessible with lift and ramp.



FIRST FLOOR



First Floor - 220 sq metre event space with 6m high barrel-vaulted ceiling with excellent natural light and ample power supply (5 x 32A sockets).

Both floors are wheelchair accessible with lift and ramp.



HIRE PACKAGE

Hire of the Old Parish Hall includes:

- Exclusive hire of the whole building and outdoor space
- Inclusive use of the professional kitchen
- Access from 8am-12am
- In house PA system and projector
- Site Manager for the duration of your event
- Free wifi

We offer optional furniture hire for an additional fee.

2018-2019 Hire price - £3000 + VAT



WEDDINGS AT THE OLD PARISH HALL
WHAT YOU GET WHEN YOU HIRE US



FAQs

Can you host wedding ceremonies?

Yes! The main hall, the downstairs reception room and the long room are all licensed by Hackney Council for civil ceremonies.

Do you charge corkage?

No! We are a dry hire venue and encourage our couples to buy in their own booze or hire a bar to supply their event.

Are you able to supply tables and chairs?

We have 5'6ft round tables and white folding chairs to cater for receptions of 150 people or less which can be hired at an additional charge of £2pp. If you are looking for something a little different you are free to hire your own furniture.

Do you have any outside space?

We have a small 20m x 2.5m outdoor courtyard.

Can we access the venue prior to the wedding to arrange set up for the day?

Hire of the Old Parish Hall includes access from 8am until midnight. If you require additional access the night before this needs to be pre arranged with us and is subject to an additional charge per hour.

When do we need to have the venue cleared by?

Ideally we require the venue to be cleared at the end of the hire period, as there may be another event the following day. If this is not possible please contact us to find out if we can arrange storage of your items.

Do you require a deposit to secure our booking?

If you do decide to go ahead and formally book the space, we go through a hire agreement at which point we charge a 50% deposit to secure the booking. The balance is then due 28 days prior to your event.

Can we bring in our own caterers?

We have a large professional kitchen and serving space with ample kitchen equipment, fridge and prep areas which can be utilised with either one of our recommended catering suppliers or a caterer of your choice.

Are we able to use candles in the event space?

We allow use of open flame candles in the event space only within suitable containers.

Is there on site parking?

No we do not have any on site parking however there is space out front for loading and unloading.

Can we fix decorations to the walls?

Only if it does not leave a visible trace on the walls. No pins, tacks, staples, cellotape, duct tape or similar adhesive tapes can be used.



RECOMMENDED SUPPLIERS

Audio Visual

PF Events

www.pfevents.com

Catering

Sabel (In-house)

www.sabelfood.co.uk

Florists

Grace and Thorn

www.graceandthorn.com

Rebel Rebel

www.rebelrebel.co.uk

Kitten Grayson

www.kittengrayson.com

Furniture and Prop Hire

Great Hire

www.greathire.com

Chair Hire

www.chairhire.co.uk

Wedhead

www.wedhead.co.uk



Photographers

Genevieve Wedding Photography

www.genevieveweddingphotography.com

Eclection Photography

www.eclection-photography.com

Wedding Planning, Styling and On the Day Coordination

Anemone

www.anemone-style.com



GET IN TOUCH

If you are interested in hiring The Old Parish Hall for your wedding get in touch with us to arrange a viewing. We'd love to show you our space.

The Old Parish Hall @ Core Clapton

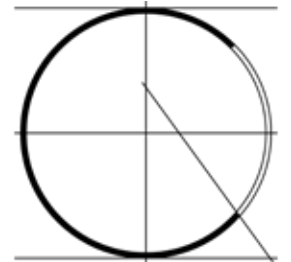
161 Northwold Road, Upper Clapton, London, E5 8RL

T: 0300 5610 161

E: events@coreclapton.org

Nearest Tube:

Clapton Overground



core clapton

WEDDINGS AT THE OLD PARISH HALL
GET IN TOUCH